

## **CRP- A collagen related peptide**

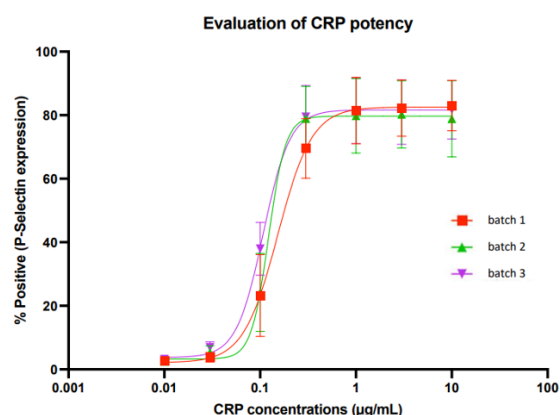
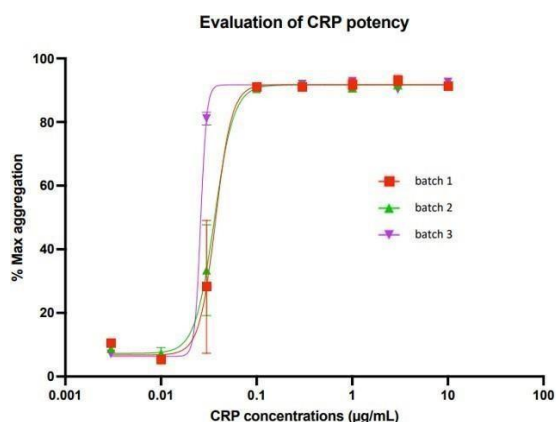
**Catalogue Numbers** CRP-A0.5-WIN03 (0.5mg Vial)  
CRP-A0.25-WIN01 (0.25mg Vial)

**Specificity** CRP-A proven to be a strong agonist of Glycoprotein GPVI receptor platelet activation pathway. For Research Use Only.

**Biological activity** Ability of CRP-A to initiate platelets activation and aggregation has been tested using p-selectin expression and light transmission aggregometry respectively  
Batch to batch consistency on CRP-A response to platelet activation and aggregation  
Minimum dose that causes maximum aggregation is between 0.08 µg/mL and 0.14 µg/mL  
Minimum dose that causes maximum activation is between 0.22 µg/mL and 0.30 µg/mL  
CRP-A activity is in the range of concentration from 10 µg/mL to 0.03 µg/mL

### **CRP-A:**

- **High potency to aggregate and activate platelets, PRP, and whole blood**
- **Strong platelet agonist proven to form a triple helical structure and elicit full activation of platelets via Glycoprotein GPVI Receptor Pathway**
- **CRP-A is stable, scalable and offers batch to batch consistency**
- **High purity of greater than 99% and high dose response**
- **Full activity proven with three different solvents**
- **Two years stability**



### **Stability**

CRP-A crosslinking process has been optimized with a high stability rate  
Homogeneity of the triple helical structure from batch to batch

Sample dissolved in water	UV-purity (230nm)
Month 6 ; -20°C	99.1%
Month 2 ; -20°C	99.8%
Month 6 ; 4°C	98.4%
A	99.5%
Month 6 ; RT	97.7%
Month 2 ; RT	98.7%
Start	99.8%

Up to 6 months when dissolved in water and stored in freezer, the UV-purity remains over 99%

**Purity** High purity rate > 99%  
Low byproducts

**Format** Lyophilized powder

**Preparation** Before using this product, make sure that all contents are collected at the bottom of the vial and not attached to the sides or inside the lid, by gently tapping the closed vial bottom down on a hard surface or centrifuge it briefly. We recommend that you liquify the entire content of the vial before transferring it to ensure the entire sample of CRP-A is used

**Warning:**

If the material sticks to the lid while attempting to dissolve the sample by addition of a solvent to the vial, It might be that some of the material is not dissolved as these small volumes don't touch the lid when shaking/vortexing.

CRP-A powder can be dissolved in water, saline or 0.01M acetic acid  
Reconstitute to a minimum of 2.5mg/ml using water, saline or 0.01M acetic acid. Vortex before each use

**Storage**

	<b>Storage Temperature</b>	<b>Storage Period</b>
Lyophilized - long term storage	-20°C	24 months
Lyophilized - short term storage	Room temperature	2 weeks
<b>In solvent at concentration:</b>		
2.5mg/ml stock solution	-20°C	6 months
2.5mg/ml stock solution	+4°C	6 months
Less than 1mg/ml working solution	+4°C	6 months

Once reconstituted in solution CRP-A remains active up to 3 hours at room temperature.

Store reconstituted CRP-A in smaller aliquots to avoid multiple freeze thaw cycles

As the manufacturer, we recommend the customer freeze dry the aliquots they want to use. They can store those aliquots as powder in the freezer and reconstitute before measuring.