

BioCytex

MAR 04

140, Chemin de l'Armée d'Afrique

13010 Marseille

France

Tel : +33 (0) 4 96 12 20 40

Fax : +33 (0) 4 91 47 24 71

Email : info@biocytex.fr

DATA SHEET

CERAMIDE

(Cat # 6040-P50T)

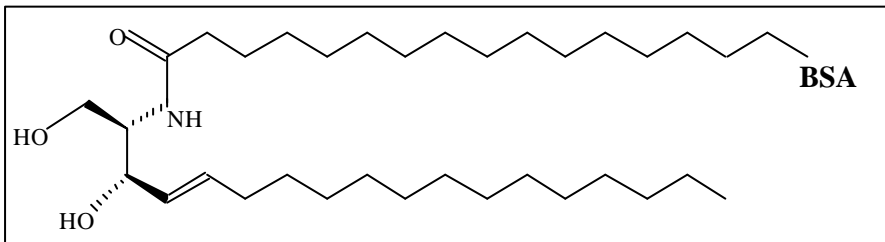
MOUSE MONOCLONAL ANTIBODY ANTI-CERAMIDE

Clone : MID 15B4

Isotype : IgM

Partner of fusion : SP2/0-Ag14

Immunogen : BSA-Ceramide (base : sphingosine- [trans-D-erythro-2-Amino-4-octadecene-1,3-diol])



Specificity : This MAb is only for research purposes. It has been tested by ELISA on ceramide covalently bound to myoglobin

Application : Detection of ceramides by ELISA

This reagent may be tested by immunochemistry with an adapted protocol

Size : 50 tests (1 mL)

Suggested amount : 20 µL/test (recommended working dilution: 1:10)

Concentration : 200 µg/mL

Buffer : PBS, NaCl 0.5M, BSA 0.1%, Sodium Azide 0.09%

Purification : Gel filtration on sephacryl S-300 from ascites

Purity : Purity > 95%

Storage : 2-8 °C

FOR RESEARCH USE ONLY. NOT FOR USE IN DIAGNOSTIC PROCEDURES.